

## Plant Information and Maintenance Guidelines

Name	Description	Native	Edible Uses	Bee / Butterfly Friendly	USDA Zone	Mature Height	Mature Spread	Light Requirements	Watering Requirements	Bloom Period
Ajuga - Bugleweed	A tough, spreading ground cover with round shiny leaves in a range of shades. Foliage colours are most vibrant with at least 3-4 hours of sun.		new shoots & leaves	✓	3-10	6-9 in	6-12 in	full sun to partial shade	moderate moisture, well-drained	spring
Allium - Ornamental Onion	Fast-growing ornamental alliums grow tall and have round flower heads composed of dozens of star-shaped flowers. Need full sun and blooms in spring.				4-10	1-4 ft	3-10 in	Full sun	All; Must be well draining	Spring
Anemone - Windflower	Graceful, poppy-like flowers that sway in the slightest breeze above a tidy mound of attractive, lobed leaves.	some species		✓	3-8b	3-4 ft	1.5-2.5 ft	full sun to partial shade	moderate moisture, organically rich soil	late summer, early fall
Astilbe - false spirea	A staple for shade, astilbe boast long-lasting frothy plumes of pink, red or white flowers and lovely, delicate foliage.			✓	3-8	1-2 ft	2-3 ft	partial shade to shade	moderate moisture, should not dry out	mid spring to mid summer
Autumn Brilliance Fern	A popular fern for shade! Bright orange fronds mature to dark green. In fall, the sori (spores) are produced on the leaves in a brilliant red.				5-9	1.5-2 ft	1.5-2 ft	part shade to shade	moderate moisture, well-drained	
Autumn Fern	The soft, finely cut fronds of ferns will fill any shady spot with graceful, soothing greenery. Young fronds emerge a brilliant copper orange. A great counterpoint to broad, heavy hosta foliage.					18-24 in	12-18 in	partial shade to shade	moist, well-draining	all season interest
Bearded Iris - Iris germanica	Bearded iris come in a staggering variety of heights and colour combinations. With unique and beautiful flowers held on strong stalks about upright, sword-like blue-green leaves, they will be the stars of you mid-spring garden,				3-9	1-4 ft	1-2 ft	full sun	average, well-draining	mid to late spring
Bee Balm - Monarda	Loved for their 'spiky hairdo' clusters of scarlet, pink or purple tubular flowers, Bee Balm are long-blooming aromatic perennials in the mint family that attract loads of pollinators to your garden.	✓		✓	4-8	2-4 ft	2-3 ft	full sun to partial shade	moist, well-draining	summer
Bergenia cordifolia	Bergenia flaunts red, pink and white flowers when bloomed in early spring. The foliage is mostly evergreen in milder climates, exhibiting a rich bronze color in the fall and winter.				4-8	1-2 ft	1-2 ft	full sun to partial shade	Moist	early to late spring
Black-Eyed Susan - Rudbeckia	An extremely hardy garden workhorse with bright yellow daisy-like petals and dark centre disks, black-eyed Susans are a garden staple.			✓	3-7	2-3 ft	1-2 ft	full sun to partial shade	moist, well-draining	mid summer to fall
Bleeding Heart - Dicentra	A favourite for the shade garden, Bleeding Heart plants feature soft, fern-like foliage with arching wands of hanging pink or white heart-shaped flowers in the spring				3-9	1-2 ft	1.5-2.5 ft	partial shade to shade	average to moderate	spring
Blue Fescue	Blue fescue is a drought-tolerant, beautiful accent for the perennial border that has finely textured, bluish sprays of foliage in tidy rounded mounds.				4-8	9-12 in	9-12 in	full sun to partial shade	low once established, well-draining	early summer, foliage = all season interest
Bluebear - Caryopteris	A favourite of bees and butterflies, this is a wonderful deciduous shrub boasting sprays of true blue flowers set off by narrow, silvery foliage.			✓	5-9	2-4 ft	2-4 ft	full sun	average, well-draining	late summer to fall

## Plant Information and Maintenance Guidelines

Name	Description	Native	Edible Uses	Bee / Butterfly Friendly	USDA Zone	Mature Height	Mature Spread	Light Requirements	Watering Requirements	Bloom Period
Brunnera - Siberian Bugloss	A slow-growing perennial for shade, brunnera has small, long-lasting bright blue flowers and sweet, heart-shaped leaves.			✓	3-8	12-18 in	18-30 in	partial shade to shade	moderate moisture, well-drained	early to mid spring
Bunchberry - Cornus canadensis	This shrubby, spreading ground cover forms a dense carpet of oval, glossy leaves that can vary from mid green to wine red. Small flowers with star-shaped white bracts in summer give way to bright red berry-like fruits.	✓			5-9	4-9"	6-12"	full sun to partial shade	average	early to mid summer
Butterfly Weed - Asclepias tuberosa	This clump-forming perennial grows glossy-green, lance-shaped leaves and clusters of bright orange-to-yellow blooms that are rich with nectar and pollen.			✓	3-9	1-2 ft	12-18 in	Full sun	Dry, well-draining	late spring to late summer
Calamintha - Calamint, Lesser Catmint	Small, bushy perennials that are known for being hardy, versatile and low-maintenance.		used in tea	✓	5-8	1-2 ft	1-2 ft	full sun to partial shade	moderate moisture preferred, can tolerate drought once established	summer
Campanula - Canterbury Bells, American Bellflower	Campanula boast masses of small, cheery, cupped flowers in lavender, blue, or white that bloom throughout the summer.			✓	4-8	1-2 ft	1-1.5 ft	full sun to partial shade	moderate moisture preferred, can tolerate drought once established	early to mid summer
Cardinal Flower - Lobelia cardinalis	A clump-forming perennial with lance-shaped dark green leaves that form basal clumps and tall flower stalks that hold clusters of tubular flowers from July into early fall. The native species has scarlet red flowers, but there are also cultivars with white, blue, purple, and rose-pink flowers. These are all excellent landscape plants for garden areas with wet soil.	✓			3-9	2-4 ft	1-2 ft	full sun to partial shade	Moist	summer to early fall
Carex - Sedge	These hardy, drought-tolerant, grassy plants are easy to grow and add texture and movement to any area of the landscape.	some species are native			5-9	1-3 ft	2-3 ft	sun to partial shade	average, well-draining	foliage = all season interest
Catmint - Nepeta	An easy-growing perennial herb with few pests, Catmint foms a delicate, lacy mound topped with spikes of tiny flowers and makes a lovely edging plant.		flowers and leaves, used in tea	✓	4-8	1-2 ft	1-2 ft	full sun to partial shade	average to low, well-drained soil	late spring to mid summer
Christmas Fern - Polystichum acrostichoides	A robust, leathery fern which has glossy, green fronds year-round. They need partial to full shade.				4-9	1-3ft	1-1.5 ft	Full to partial shade	Moist, well-draining	
Columbine - Aquilegia	Delicate, spurred flowers that are held above an attractive mound of lacy foliage. These short-lived perennials will freely self-seed.	✓			3-9	15-20 in	12-18 in	full sun to partial shade	moderate moisture, organically rich soil	mid spring

## Plant Information and Maintenance Guidelines

Name	Description	Native	Edible Uses	Bee / Butterfly Friendly	USDA Zone	Mature Height	Mature Spread	Light Requirements	Watering Requirements	Bloom Period
Coneflower - Echinacea	A low-maintenance upright perennial flower, echinacea is a quintessential prairie plant with daisy-like or shuttlecock-shaped flowers in a wide range of colours.	✓	used in tea	✓	3-9	2-3 ft	1-2 ft	full sun	low to moderate, well-draining	summer
Coral Bells - Heuchera	An amazingly colourful foliage plant for light shade, coral bells go great with hosta, astilbe, brunnera etc. Coral bells have lobed, brightly coloured leaves and sprays of tiny bell-shaped flowers held aloft on tall stems.	✓			4-8	1-2 ft	1-2 ft	full sun to partial shade	moderate moisture, should not dry out	spring, summer
Daylily - Hemerocallis	A garden staple, this easy-care plant will grow in a wide range of conditions. Resilient mounds of grassy, arching leaves give rise to stiff scapes from which dozens of showy flowers bloom, each lasting for a day or so.				3-10	1-4 ft	1-3 ft	full sun to partial shade	Moderate moisture, tolerates drier conditions once established	late spring to mid summer
Delphinium - Larkspur	Tall and upright with gorgeous spikes of densely-packed cupped florets and feathery, deeply lobed leaves			✓	3-7	5-6 ft	1-1.5 ft	full sun	moist, well-draining	summer to early fall
Dianthus	Compact, low-growing perennial with handsome blue-grey finely cut foliage and bright, cheerful flowers			✓	3-9	6-12 in	6-12 in	full sun	low to average, well-draining	late spring to mid summer
False Indigo - Baptisia	Tough and durable, this compact, upright perennial bears long-lasting spikes of pea-shaped indigo flowers resembling lupines.	some species are native		✓	3-8	1-2 ft	1-2 ft	full sun	low to average, well-draining	late spring to early summer
Feather Reed Grass - Calamagrostis	An upright, architectural ornamental grass that provides texture and motion to the landscape, m feather reed grass is distinguished by erect, feathery silver-grey flower plumes.	✓			4-9	3-5 ft	2-3 ft	full sun to partial shade	average	mid spring to early summer
Foamflower - Tiarella	A trouble-free groundcover, long-lasting masses of foamy white or pinkish flowers floating above the foliage on thin stems in the spring.	✓			3-8	12-24 in	6-12 in	partial shade to shade	evenly moist, well-draining	spring
Foamybells - Heucherella	This hybrid perennial's has short delicate sprays of white or pink star-shape flowers rising on slender stems from spring to fall. Foamy bells is also appreciated for its handsome clumps of leaves, which are broad-lobed, colorful, and distinctively veined.				3-7	2-3 ft	1-2 ft	Part sun to shade	Average to rich, well-drained	late spring to early summer
Fountain Grass - Pennisetum	Among the most beautiful ornamental grasses, fountain grass feature showy, feathery flower spikes atop leaves and stems that flow like a fountain plume.				5-9	1-4 ft	1-3 ft	full sun to partial shade	average	summer through fall
Foxglove	Eye-catching biennials with tall spires of outward-facing, funnel-shaped flowers.			✓	4-10	2-5 ft	1-2 ft	full sun to partial shade	average to moderate	early to mid summer
Goatsbeard - Aruncus dioicus	An airy plant with attractive clover-like foliage. The blooms come in many colours such as red, orange, yellow, blue, purple, pink, white. Established plants typically bloom for about four weeks, starting in mid-spring.				4-7	4-6 ft	2-4 ft	Full to partial sun	Moist, loamy	spring, summer
Guara - Wandflower	A drought-tolerant wildflower with an exceptionally long bloom period.	✓		✓	5-9	2-3 ft	1-2 ft	full sun	low, drought-tolerant	early summer to mid fall

## Plant Information and Maintenance Guidelines

Name	Description	Native	Edible Uses	Bee / Butterfly Friendly	USDA Zone	Mature Height	Mature Spread	Light Requirements	Watering Requirements	Bloom Period
Hakone Grass - Hakonechloa	A tough, long-lived, and beautiful ornamental grass, the gracefully arching blades of Hakone grass add interest, colour and texture to the shade garden.				5-9	12-18 in	12-24 in	partial shade to shade	average to moist, well-draining	foliage = all season interest
Hellebore - Lenten Rose	Among the earliest and longest-lasting bloomers, these hardy, woodland perennials provide year-round dark green foliage often with beautiful pink or white marbled variegation				4-9	1-2 ft	1-2 ft	partial shade to shade	moderate moisture, organically rich soil	late winter to early spring
Hens and Chicks - Sempervivum	Cute but tough, these mat-forming succulents form a profusion of rosettes with fleshy leaves can be round or pointed, waxy or downy, bright green to dusky mahogany, and everything in between.				3-8	4-6 in	6-8 in spreading	full sun	low once established, average, well-drained soil	rosettes = all season interest
Hosta - Plantain Lily	An extremely popular and care-free shade perennial, hostas are low-growing, clump forming mounds of beautiful heart shaped leaves varying from pale yellow to deep waxy green to powdery blue-green, with endless styles of variegation.		all parts		3-9	1-3 ft	1-4 ft	partial shade to shade	moderate moisture, organically rich soil	summer
Hyssop - Agastache	An herb from the mint family, hyssop features long-lasting, upright bottlebrush flowers and finely textured, aromatic foliage.	some species	used in tea	✓	5-10	1-3 ft	1-2 ft	full sun	drought tolerant once established	early summer to mid fall
Ice plant - Delosperma	Vigorous, mat-forming groundcover with deep green, succulent leaves and bright, aster-like flowers		leaves	✓	5-10	3-10 in	12-24 in	full sun	dry, well-draining, will tolerate drought	
Japanese Blood Grass - Imperata	With upright, brilliant red leaves, this distinctive ornamental grass provides texture and colour to any garden.				5-9	1-2 ft	1-2 ft	full sun to partial shade	average	summer through fall
Japanese Iris - Iris ensata	With upright, grassy leaves and flattish, blousy blooms in a wide variety of colours and patterns, Japanese iris are a little fussy about soil and water but in the right spot are gorgeous and trouble-free.				4-9	2-4 ft	2-3 ft	full sun to partial shade	Evenly moist in spring, less so in summer and drier in fall - loose, friable soil a must	early to mid summer
Japanese Painted Fern - Athyrium	This dynamic painted fern of epic proportions has arching, silvery green fronds with deep purple midribs that radiate outward from a supersized spreading clump. The massive form and dramatic foliage is sure to thrill in a shaded bed or woodland setting, partnered with larger hostas. An herbaceous perennial.				5-8	3 ft	5-6 ft	Full to partial sun	High water needs, well-Draining, moist	
Joe Pye Weed - Eutrochium purpureum	An outstanding, butterfly-friendly shrub-like perennial that features large clusters of scented purplish pink flowers in the mid summer to early fall	✓	all parts	✓	4-9	5-7 ft	2-4 ft	full sun to partial shade	average to moderate	late summer to mid fall
Lady Fern Lady in Red - Athyrium	Deciduous, terrestrial ferns that are suitable to a wide range of garden conditions, including shady borders and woodland gardens. Prefers partial shade.				3-9	2-3 ft	2-3 ft	partial shade	Moist, well-draining	

## Plant Information and Maintenance Guidelines

Name	Description	Native	Edible Uses	Bee / Butterfly Friendly	USDA Zone	Mature Height	Mature Spread	Light Requirements	Watering Requirements	Bloom Period
Lavender- Lavendula	A semi-evergreen mound of attractive grey-green foliage with long-lasting blue or lavender flower heads, and oh that heavenly scent!		flowers and leaves	✓	5-8	1-3 ft	1-3 ft	full sun	low once established; must have low-fertility, very well-draining soil	summer
Liatriis - Blazing Star	An upright, clump-forming perennial boasting fluffy spikes of rose-purple or white flowers. Virtually care-free once established.	✓		✓	3-8	2-5 ft	1-2 ft	full sun	low to average, well-draining	mid summer to fall
Ligularia - Leopard plant, ragwort	With thick, large, serrated leaves and bright yellow clumps of flowers, Leopard plant is a showstopper for moist, shady spots that can be otherwise hard to fill.				3-8	3-4 ft	2-3 ft	partial shade to shade	consistently moist, rich soil	early to late summer
Lily - True Lily, Liliium	These stately, upright flowers make a spectacular addition to any garden. Outward or downward facing, this classic flower comes in many colours and sizes to fit any sunny garden niche.				4-8	1-5 ft	1-2 ft	full sun	average, well-draining	early to mid summer
Lungwort - Pulmonaria	A low-growing woodland perennial with striking silver markings on the leaves and sprays of cheerful blue, pink or white flowers in the very early spring.				3-9	10-14 in	12-24 in	partial shade to shade	Moist, rich soil, well-draining	early spring
Lupin - Lupine	A gorgeous vertical accent for any garden, lupines are tall, showy spires topped with densely packed spires of flowers in a multitude of bold colour combinations.	✓		✓	3-7	2-5 ft	2-3 ft	full sun to partial shade	average, well-draining	spring, summer
Maiden grass - Miscanthus	Adding drama and structure to the garden, maiden grass are a wonderful choice for the back of the sunny border or as a specimen surrounded by smaller plants. Be sure to give it lots of space as clumps can become quite large.				5-9	5-6 ft	3-4 ft	full sun	evenly moist, drought-tolerant once established	summer through winter
Milkweed - Asclepias	Moderately tall wildflower with broad leaves and thick, fuzzy stems. Round clusters of small purplish pink flowers develop into interesting spiky seed pods later in the season. The primary host for Monarchs, it is a must-have for the butterfly garden!	✓		✓	3-9	2-5 ft	1-1.5 ft	full sun	average	mid summer
Moss - Sagina	A soft, low-traffic mossy groundcover perfect for between pavers, rock gardens, or as edging.				4-8	1-2 in	spreads widely	full sun to partial shade	evenly moist, well-draining	late spring to early summer
Ostrich Fern	The soft, finely cut fronds of ferns will fill any shady spot with graceful, soothing greenery. Upright and stately, ostrich fern makes great counterpoint to broad, heavy hosta foliage.	✓	fiddleheads			2 - 3 ft	2 - 3 ft	partial shade to shade	moist, well-draining	all season interest
Phlox - Creeping	Perfect for edging and rock gardens, this low-growing, mat-forming plant with fine, moss-like foliage provides a stunning carpet of colour to kick off the spring and a soothing green groundcover that makes a perfect foil for the rest of the garden thereafter.	✓		✓	5-8	6-12 in	12-24 in	full sun to partial shade	Moderate moisture, tolerates drier conditions once established	early to mid spring

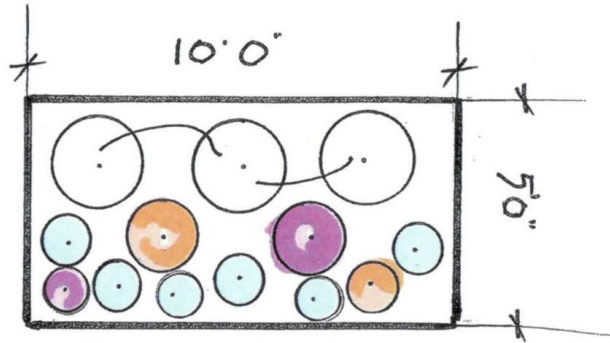
## Plant Information and Maintenance Guidelines

Name	Description	Native	Edible Uses	Bee / Butterfly Friendly	USDA Zone	Mature Height	Mature Spread	Light Requirements	Watering Requirements	Bloom Period
Phlox - Tall	Growing in upright clumps with large, dense, long lasting flower panicles, tall garden phlox is not only beautiful but provides colour and fragrance for during the second half of summer, a time when many other plants are finished their bloom.	✓		✓	4-8	2-4 ft	1-3 ft	full sun to partial shade	average, well-draining	mid summer to fall
Pincushion - Scabiosa	Small but mighty, pincushion flowers wave merrily in the breeze on wiry stems, attracting butterflies and blooming abundantly all season long with little care.			✓	3-9	12-18 in	10-15 in	full sun	average, well-draining	late spring to fall
Poppy - Papaver	Poppies are a highlight of the garden, offering beautiful, crepe paper-like blooms held aloft on meandering stems in the late spring, attractive, textural foliage and interesting seed pods that last the rest of the season.				3-9	1-3 ft	1-2 ft	full sun	moderate moisture, organically rich soil	late spring to early summer
Rozanne Hardy Geranium - Cranesbill	One of the longest blooming perennials in the garden! Violet blue flowers appear nearly all summer long until frost. It should be a staple in every landscape.			✓	5-8	1-2 ft	15-20 in	Full to partial sun	average to moist, well-draining	mid spring to mid summer
Russian Sage - Perovskia	Russian sage grows as a many-stemmed upright clump with finely cut, grey-green foliage and long panicles of pale blue to deep azure flowers, creating a cloud of long-lasting colour.			✓	5-9	2-3 ft	2-3 ft	full sun	low once established, average, well-drained soil	mid summer to fall
Salvia - Sage, Meadow Sage	With their densely packed, vertical flower spikes ranging in shades of indigo, purple, and pink, these low-maintenance, hardy and long-blooming perennials provide a gorgeous vertical contrast to any garden combination.			✓	4-8	1.5-3 ft	1-3 ft	full sun	average, well-draining	late spring to fall with deadheading
Sedum - Stonecrop	These plants not only tolerate dry, rocky soil but positively thrive in it. Perfect for borders or rock gardens, these plants grow best in full sun and sometimes sport beautiful pink or purple flowers. They usually bloom in the fall time.			✓	3-9	1-2 ft	1-2 ft	Full sun	Dry, well-draining	Fall
Shasta Daisy - Leucanthemum	A classic, and for good reason: these tough, tall, long-blooming, cheerful flowers are sure to lift your spirits.			✓	4-10	3-5 ft	1-3 ft	full sun to partial shade	low to average, well-draining	mid summer to early fall
Siberian Iris - Iris siberica	A fabulous perennial flower with slim, grass-like upright leaves and delicate, long-lasting flowers that sway in the breeze. Siberian iris bloom in late spring or early summer, after the bearded forms are done, extending the iris season.				3-9	3-4 ft	2-3 ft	full sun to partial shade	Moderate moisture, tolerates drier conditions once established	late spring to early summer
Silvermound - Artemesia	A wonderful, low-growing mounding plant with fine, silky foliage that is great for edging.				4-8	6-12 in	12-18 in	full sun to partial shade	dry to average once established, well-draining	foliage = all season interest
Snakeroot - Actaea/Cimicifuga	With dark, astilbe-like foliage and bottlebrush flowers attractive to bees, snakeroot are a great counterpoint to hostas in the shade garden.	✓		✓	3-8b	3-4 ft	2-3 ft	partial shade to shade	moderate to moist soil, no standing water	late summer
Solomon's Seal - Polygonatum	Elegant, arching woodland plants with graceful leaves and small, charming, dangling flowers in the spring. Form upright clumps, providing nice height to the shade garden.	✓			3-9	2-4 ft	1-2 ft	partial shade to shade	Moist, rich soil, well-draining	mid to late spring

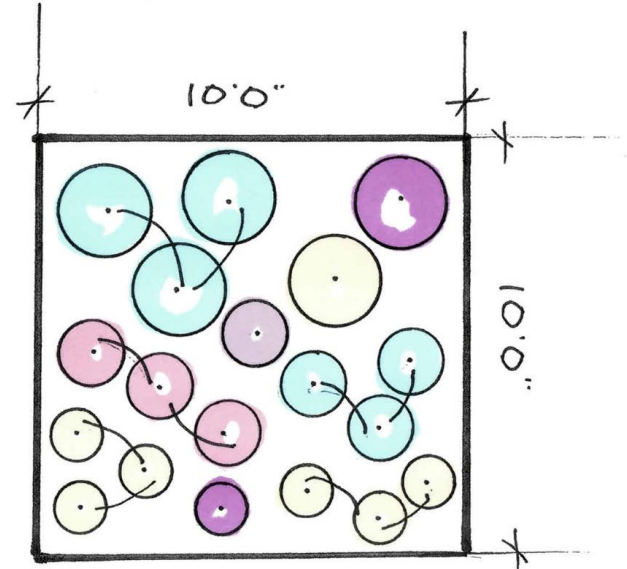
## Plant Information and Maintenance Guidelines

Name	Description	Native	Edible Uses	Bee / Butterfly Friendly	USDA Zone	Mature Height	Mature Spread	Light Requirements	Watering Requirements	Bloom Period
Speedwell - Veronica	Spreading or clump-forming, the abundant purple or pink flower spikes of Veronica are a wonderful companion to larger specimen plants in the sunny border.			✓	3-8	9-24 in	12-24 in	full sun	average to moist, well-draining	early to late summer
Spurge - Euphorbia	Notable for its unique variegated flowers and foliage, 'Ascot Rainbow' euphorbia forms a bushy mound of stunning rosettes of lance-shaped grey-green leaves with golden yellow edges and topped from early to late spring with variegated cream, lime and green flowers. The foliage becomes tinged with pink in cooler weather, adding to its interest through the summer and fall.				5-9	1-2 ft	1-2 ft	full sun to partial shade	low, well-drained soil	early to late spring
Switch Grass - Panicum	Handsome and reliable, switch grass has a dense, upright habit and stiff round stems that provide year-round interest.	✓			5-9	3-6 ft	2-3 ft	full sun to partial shade	average	mid to late summer
Turtlehead - Chelone obliqua	Turtlehead is a clump-forming perennial plant that blooms in fall with hooded flowers that look similar to snapdragon blooms. It blooms from summer to early fall and prefers full sun and partial shade.	✓		✓	5-9	2 - 3 ft	1-2 ft	full sun to partial shade	rich and moist soil	summer to early fall
Yucca - Adam's needle	This broadleaf evergreen makes a real statement. The upright, sword-like leaves contrast beautifully with other plants and lend a tropical look to your garden, and the creamy white flowers held aloft on strong stalks are arrestingly beautiful.		flowers, fruit and stem		5-8	3-6 ft	2-4 ft	full sun	low to average	early to mid summer
Zebra Grass - Miscanthus sinensis	Green leaves with gold bands. Reddish purple plumes turn tan. Shorter, more upright variety.				5-9	3-4 ft	2-3 ft	Full to partial sun	low to average, well-draining	late summer

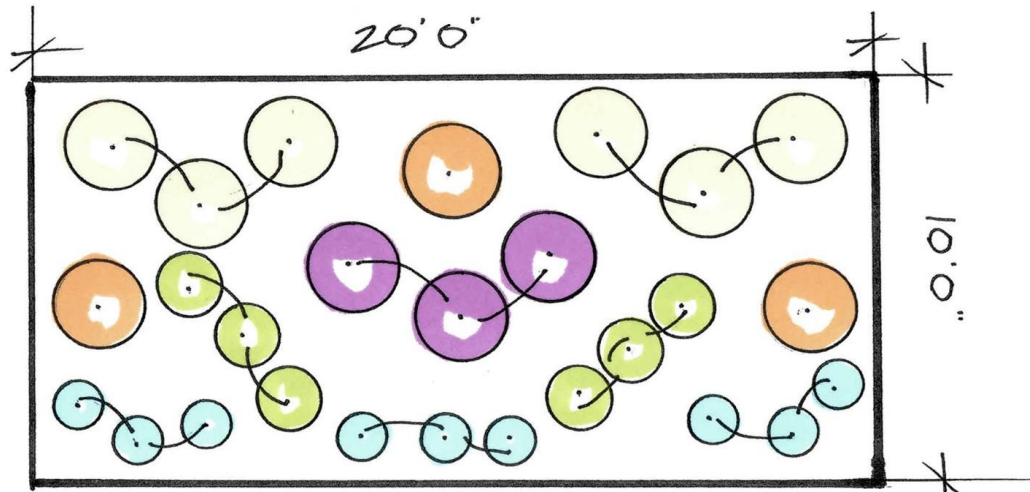
50'SQFT GARDEN BED



100'SQFT GARDEN BED



200'SQFT GARDEN BED



MODERN LOVE